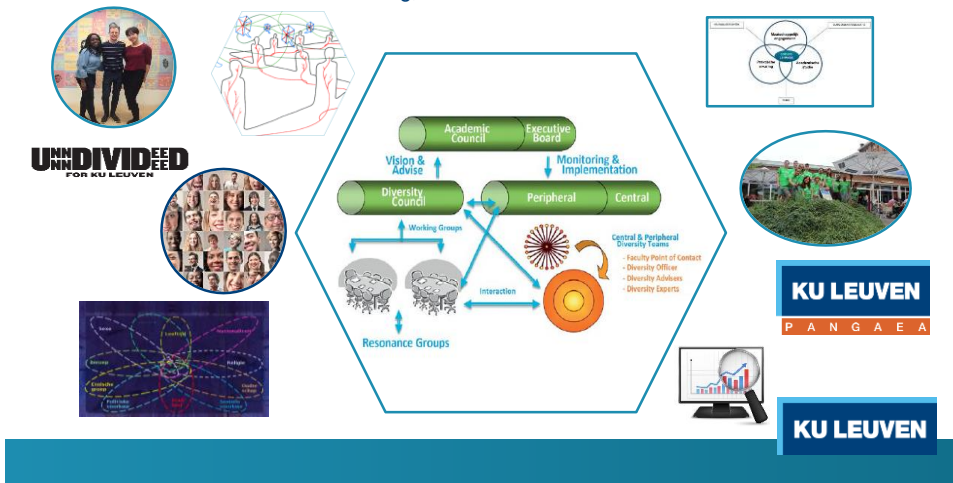


# KU Leuven intercultural:

linking decentralized initiatives with central support:

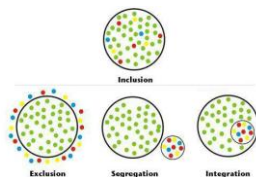
Intercultural meeting Center Pangaea  
 Intercultural office, working group Interculturality,  
 commission of religious and philosophical diversity, confidential network,  
 monitoring, WG Talent in Inclusion



## Working Group Talent In Inclusion: Tinc

### Wants to:

- Inspire
- Intensify
- Initiate
- Implement



### Themes:

- Decolonization of the curriculum
- Integration of student groups
- Anti-discrimination, polarization, implicit bias
- Activating, talent oriented teaching
- Power relations and unacceptable behavior
- Reaching out at students that are difficult to reach.

